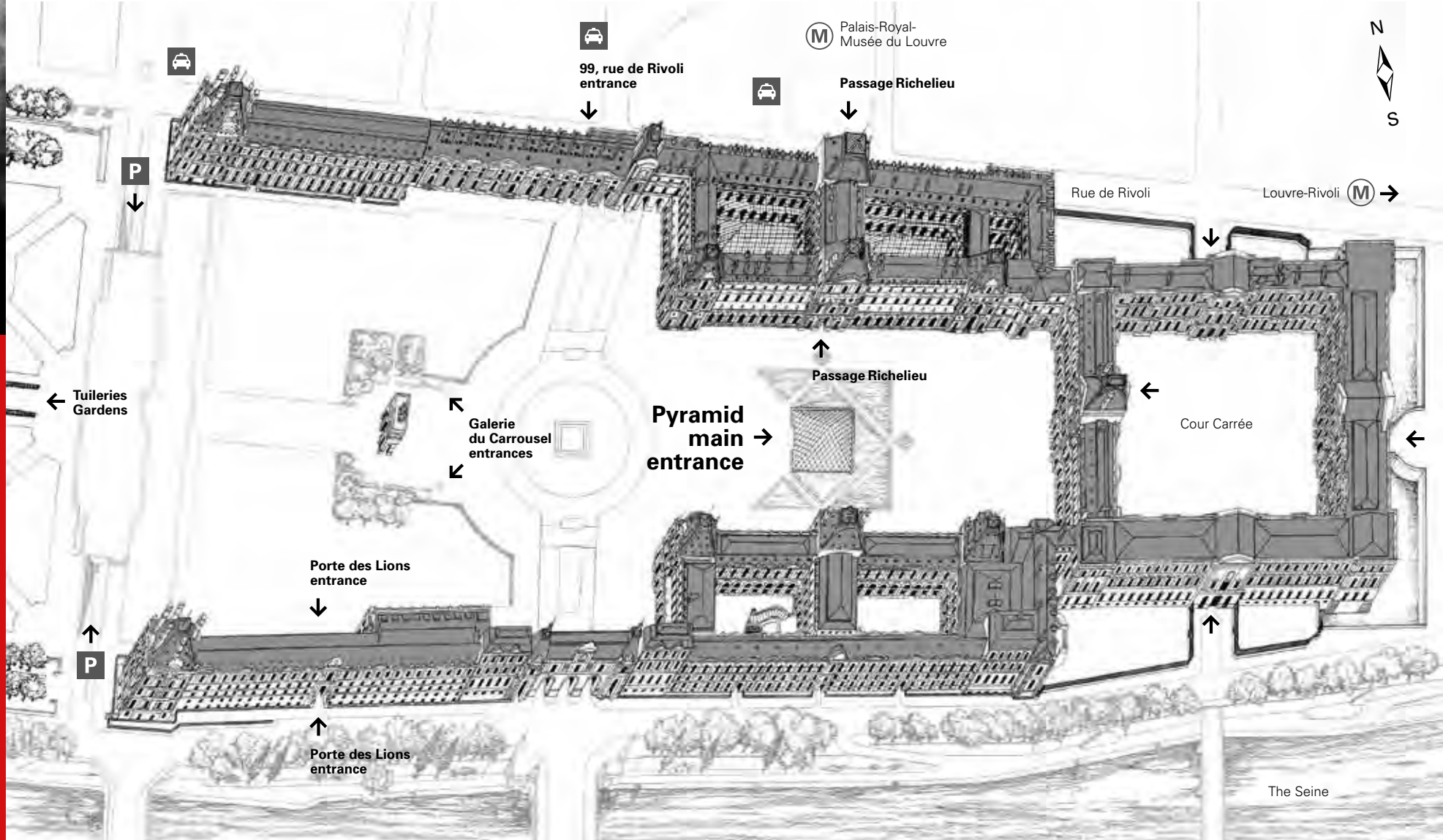


Plan / Information English

LOUVRE



Collections

Near Eastern Antiquities

This department presents the civilizations of the ancient Middle East, which date to seven thousand years BC. They succeeded each other in Mesopotamia, Iran, and the Levant, a vast territory stretching from the Mediterranean Sea to India.

Egyptian Antiquities

Created by Jean-François Champollion, this department illustrates the art of ancient Egypt by means of two designated paths. The first is chronological, from the origins to Cleopatra, and the second is thematic, highlighting specific aspects of Egyptian civilization. Two additional sections, devoted to Coptic Egypt and Roman Egypt, round off this presentation.

Greek, Etruscan, and Roman Antiquities

This department contains works produced by three ancient civilizations: Greece, Etruria, and Rome. On the ground floor, a chronological path concentrates on marble sculptures from the 3rd millennium BC to the 6th century AD. On the first floor, the collection is organized by technique and type of material used: bronzes, jewelry, silverware, and glassware as well as terracotta figurines and vases.

History of the Louvre and Medieval Louvre

These two rooms and an archeological path present the architectural history of the palace.

Paintings

The collections in this department cover the history of European painting from the mid-13th century to the mid-19th century. They are divided into three large groups: the French school (a numerical majority), the Italian and Spanish schools, and the Northern European schools (German, Flemish, and Dutch).

Sculptures

This department encompasses European sculpture from the High Middle Ages to the mid-19th century. The collections contain French works for the most part, with a number of significant pieces from Italy, Spain and Northern Europe.

Decorative arts

The collections in this department—e.g. objects from the Middle Ages and the Renaissance, decorative arts of the 17th and 18th centuries, items from the *Diamants de la Couronne* collection belonging to the French crown, 19th-century objects and furniture, and the Napoleon III apartments—spans many different periods.

The 18th century decorative arts section is closed until 2012 due to major restorations supported by the High Museum of Art and its patrons: Mrs. Anne Cox Chambers, Accenture, UPS, Turner Broadcasting System Inc., The Coca-Cola Company, Delta Air Lines, AXA Art Insurance Corporation and The Sara Giles Moore Foundation, as well as the Cressent Circle and American Friends of the Louvre.

Prints and Drawings

The Prints and Drawings Department contains the collection of drawings (more than one hundred thousand works), the Edmond de Rothschild donation and the engraved plates collection. These works may be viewed privately by arrangement. Remarkably rich but extremely fragile, they are displayed in regular temporary exhibitions, as well as in the exhibition rooms of the museum on a rotational basis.

Viewing room, Department of Prints and Drawings.
Information: 01 40 20 52 51.

Islamic Art

On display in this department are works from Islamic areas including various countries in the Mediterranean Basin, Iran, central Asia and India. Some items used to belong to the French royal collections. This collection is composed primarily of objects made of ceramics, metals or wood in addition to ivories, rugs, and paintings from the 7th to the 19th century.

The exhibition rooms used for the Department of Islamic Art are currently closed. A new gallery is scheduled to open in the Cour Visconti in 2012.

Arts of Africa, Asia, Oceania, and the Americas

This selection of works, on display at the Louvre since April 2000, is part of the collections from the Quai Branly museum.

Find out more about the collections: www.louvre.fr

Visit rules



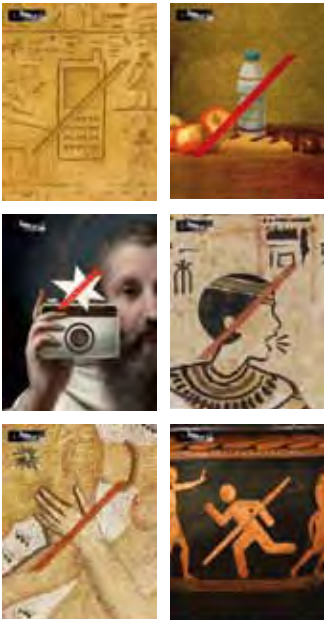
The Louvre Museum is starting a new campaign to make visitors realize the connection between respect for works of art and their preservation, called «Les règles de l'art».

As you proceed through the museum, you will recognize these pictograms: each one represents one of the six rules to be followed while visiting the museum. By following these rules, you are helping us effectively promote and protect our heritage collections while ensuring a pleasant visit for all.

In permanent collection rooms, visitors may take photographs and videos. However, the use of a flash or any other type of lighting equipment is prohibited.

In temporary exhibition rooms, visitors may not take photographs or videos.

Visitors may not use their cell phone, smoke, consume food or beverages, speak loudly, touch any work of art, or run in any room of the museum.



Visitor information

Address

Musée du Louvre,
75058 Paris Cedex 01.
Tel.: +33 (0)1 40 20 50 50.

Getting to the Louvre

- Main entrance by the Pyramid.
- Other entrances: the Porte des Lions entrance (direct access to the Arts of Africa, Asia, Oceania, and the Americas), the Galerie du Carrousel entrance (99, rue de Rivoli, or through the Jardin du Carrousel), and the Passage Richelieu entrance (for groups, visitors already bearing a valid admission ticket, or those headed for the auditorium).
- Metro station: Palais Royal-Musée du Louvre (Lines 1 and 7).
- Underground parking lot: from 7 a.m. to 11 p.m., avenue du Général-Lemonnier.
Tel.: +33 (0)1 42 44 16 32.
- Taxis: place du Palais-Royal.
- Buses: 21, 24, 27, 39, 48, 68, 69, 72, 81, 95.
- Batobus.
- Vélib (self-service bicycles), station numbers 1013 to 1015, 1023 and 1025.

Museum hours

- Open every day, except Tuesdays and certain holidays.
- The Pyramid entrance: 9 a.m. to 10 p.m., except Tuesdays.
 - The Porte des Lions entrance: 9 a.m. to 5:30 p.m., except Tuesdays and Fridays.

Museum collection hours

Open 9 a.m. to 6 p.m. Late night opening on Wednesdays and Fridays until 10 p.m. Exhibition rooms close from 5:30 p.m. or 9:30 p.m. on Wednesdays and Fridays. There is no late night opening on public holidays.

Gallery opening hours

To know which rooms are opened or closed on each day of the week, visitors may check a weekly schedule available at the Pyramid entrance, at the information desk or on www.louvre.fr.

Temporary exhibition hours

- Under the Pyramid (Hall Napoléon): from 9 a.m. to 6 p.m., and until 10 p.m. on Wednesdays and Fridays. Special prices apply.
- Exhibitions held in permanent collection galleries: opening hours are the same as for the museum.



Information desk:

Beneath the Pyramid and at the Porte des Lions entrance.
Tel.: +33 (0)1 40 20 53 17.



Visitors with disabilities

To leave a message:
- Tel.: +33 (0)1 40 20 59 90.
- handicap@louvre.fr

Visitors with impaired mobility

Wheelchairs, strollers and baby carriers are available free of charge for use while visiting the museum.
Information:
Tel.: +33 (0)1 40 20 53 17.

Group visits

For groups of 7 or more, a reservation must be made in advance.
Information:
- Tel.: +33 (0)1 40 20 57 60 (independent groups)
- Tel.: +33 (0)1 40 20 51 77 (groups that require a museum tour guide).

Admission prices

Tickets

Tickets are valid all day for the permanent collections and temporary exhibitions, except those in the Hall Napoléon. They include same-day access to the Musée Eugène-Delacroix. The ticket window closes at 5:15 p.m. (or 5 p.m. at the Porte des Lions entrance) and at 9:15 p.m. on Wednesdays and Fridays.

Full price: €9,50.

Reduced price: €6 for all visitors on Wednesdays and Fridays after 6 p.m.

Exhibitions in the Hall Napoléon: €11
Combined ticket: €14 for the permanent collections and exhibitions in the Hall Napoléon; reduced price: €12

Free admission: Upon presentation of the appropriate supporting document, admission is free for young people under 18, job-seekers, disabled visitors and one accompanying person. Admission is free for EEC citizens under 26 and practicing teachers upon presentation of a valid «Pass education» card, excluding the temporary

exhibitions in the Hall Napoléon. Admission is free for all on the first Sunday of every month.

Information:

Tel.: +33 (0)1 40 20 53 17.

Purchasing tickets in advance

- Visitors with tickets purchased in advance do not have to wait in line and their tickets have an unlimited date of validity. Reservations can be made:
- By visiting www.louvre.fr
 - By calling 0 892 684 694 (€0.34/min.) or +33 (0)1 41 57 32 28
 - At many stores in France, including: Auchan, Bon Marché, Carrefour, Cora, Cultura, Fnac, Galeries Lafayette, Leclerc, Printemps Haussmann, and Virgin...

Purchasing multiple tickets (20 minimum)

(For tour operators, associations, comités d'entreprise in French companies etc.)
- Musée & Compagnie,
Tel.: +33 (0)1 40 13 49 13.
- museecie@rmn.fr

Multimedia guide: €6; reduced price of €4 for job-seekers and disabled visitors, €2 for children under 18 years of age.

Musée national Eugène-Delacroix

6, rue de Furstenberg, 75006 Paris.
Open from 9:30 a.m. to 5 p.m. daily except Tuesdays. Information:
+33 (0)1 44 41 86 50.

Société des amis du Louvre (Friends of the Louvre)

Tel.: +33 (0)1 40 20 53 34.

Espace adhésion (Membership center)

Allée du Grand-Louvre; open from 9 a.m. to 5 p.m. and until 9 p.m. on evenings with late night opening.
Tel.: +33 (0)1 40 20 51 04.
Passes available:
- The *Carte Louvre jeunes*.
- The *Carte Louvre familles*.
- The *Carte Louvre professionnels*.
- The Paris Museum Pass.

The Paris Museum Pass

Valid for 2, 4, or 6 days in 60 museums and monuments in the Paris area.
Prices: €32, €48 or €64

Services and amenities



Free services

A coat and bag check service (small bags only), a first aid room, strollers and baby carriers to use when visiting the museum, and a lost-and-found service.

Free brochures

A number of designated tour paths and brochures are available at the information desk.

Activities at the Louvre

Introductory tours in French and in English; guided tours; workshop activities for children and adults signed up as individuals or in groups (except on Sunday afternoons, Sundays when admission is free, and holidays). To sign up, go to the group reception desk.

Bookstore, boutiques and engravings

Guidebooks, catalogues, and reproductions of art works are sold under the Pyramid and in the Allée du Grand Louvre.



Multimedia guide

Chose from a selection of works and a choice of tour paths in French, English, Spanish, German, Italian, Japanese, Korean and French sign language. For hire at the tills situated at the Denon, Sully and Richelieu entrances.



Places to eat

- Cafés/tea rooms.
- Cafés/restaurants
- Cafeteria.
- Sandwich and take-out outlets.

Tuileries Gardens

- Tel.: +33 (0)1 40 20 90 43.
- Free guided tour: in French every Saturday and Sunday afternoon, from April to October. Leaves at 3:15 p.m., lasts approximately 1 hour 15 minutes.
 - Outdoor activities and shows.
 - Librairie des jardins bookstore (place de la Concorde).
 - Many places to eat.

The information in this document, including price information, is subject to change.



Napoleon Hall Under the Pyramid



Metro station:
Palais Royal-Musée
du Louvre

Access
to shopping area



Inverted
Pyramid

Denon wing

- Italian and Spanish Paintings
- 19th-century French Paintings
- English Paintings
- Galerie d'Apollon, the Diamants de la Couronne jewelry collection
- Italian, Spanish and Northern European sculptures
- Greek, Etruscan and Roman Antiquities
- Roman Egypt and Coptic Egypt
- Arts of Africa, Asia, Oceania, and the Americas

Richelieu wing

- 14th-17th century French Paintings
- German, Flemish and Dutch paintings (Northern European schools)
- Decorative arts (Middle Ages, Renaissance, 17th and 19th centuries)
- Napoléon III apartments
- French sculptures
- Mesopotamia and ancient Iran
- Islamic Art

Sully wing

- 17th, 18th, 19th-century French Paintings
- 17th, 18th and 19th-century Drawings and pastels
- 17th, 18th-century Decorative arts
- Greek, Etruscan and Roman Antiquities
- Pharaonic Egypt
- Ancient Iran, Arabia and the Levant
- History of the Louvre and Medieval Louvre

1 Espace Adhésion (membership center)

- 2 Post office
- 3 Souvenir shop

4 Café featuring Louvre publications

- 5 Espace services billetterie
- 6 Société des amis du Louvre
- 7 Shop selling items for young people
- 8 Bookstore

9 Audio-visual room:

Films about the Louvre.
The program is posted at the entrance.
Free of charge.

11 Auditorium (capacity: 420):

Archeology, art history, literature, cinema, and music: lectures, readings, films, concerts and entertainment for young audiences. Used for 300 events each season.

Information:

+33 (0)1 40 20 55 55
or on www.louvre.fr

Reservations:

+33 (0)1 40 20 55 00.

Richelieu

Denon

Sully

Information desk

Reception desk for information and advice on visiting the museum.

10 Reception desks for groups

This is the meeting point and point of departure for:

- Group tours (both independent groups and groups with a museum tour guide)
- Activities and private tours.

Temporary exhibition
Hall Napoléon

American Friends of the Louvre

American Friends of the Louvre gratefully acknowledges the generous support of its Corporate Founder Members:

Natixis US Corporate and Investment Banking
Sotheby's

American Friends of the Louvre salutes **The Annenberg Foundation** for its major support of the development of educational tools to enable the Louvre to better serve its visitors.

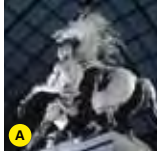
American Friends of the Louvre – a not-for-profit public charity – was founded to strengthen ties between the Louvre and its American visitors. For more information or to make a donation online, go to: www.aflouvre.org

Guide/map subject to modifications.
Graphic design: Atelier Takavoir/B. Pall/Musée du Louvre.
Art consultant: P. Bernard. Cover drawing: G. Nicot, Chief architect and curator for the Domaine national du Louvre et des Tuileries.
Project coordinator: A. Giroux, Musée du Louvre. Photo credits: D.R./Musée du Louvre. Printing: Technigraphic, 11/2010..

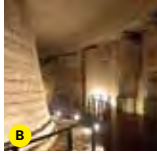
-1

Lower Ground Floor Entresol

- Sculptures
- Egyptian Antiquities
- History of the Louvre
- The Medieval Louvre
- Temporary exhibition halls



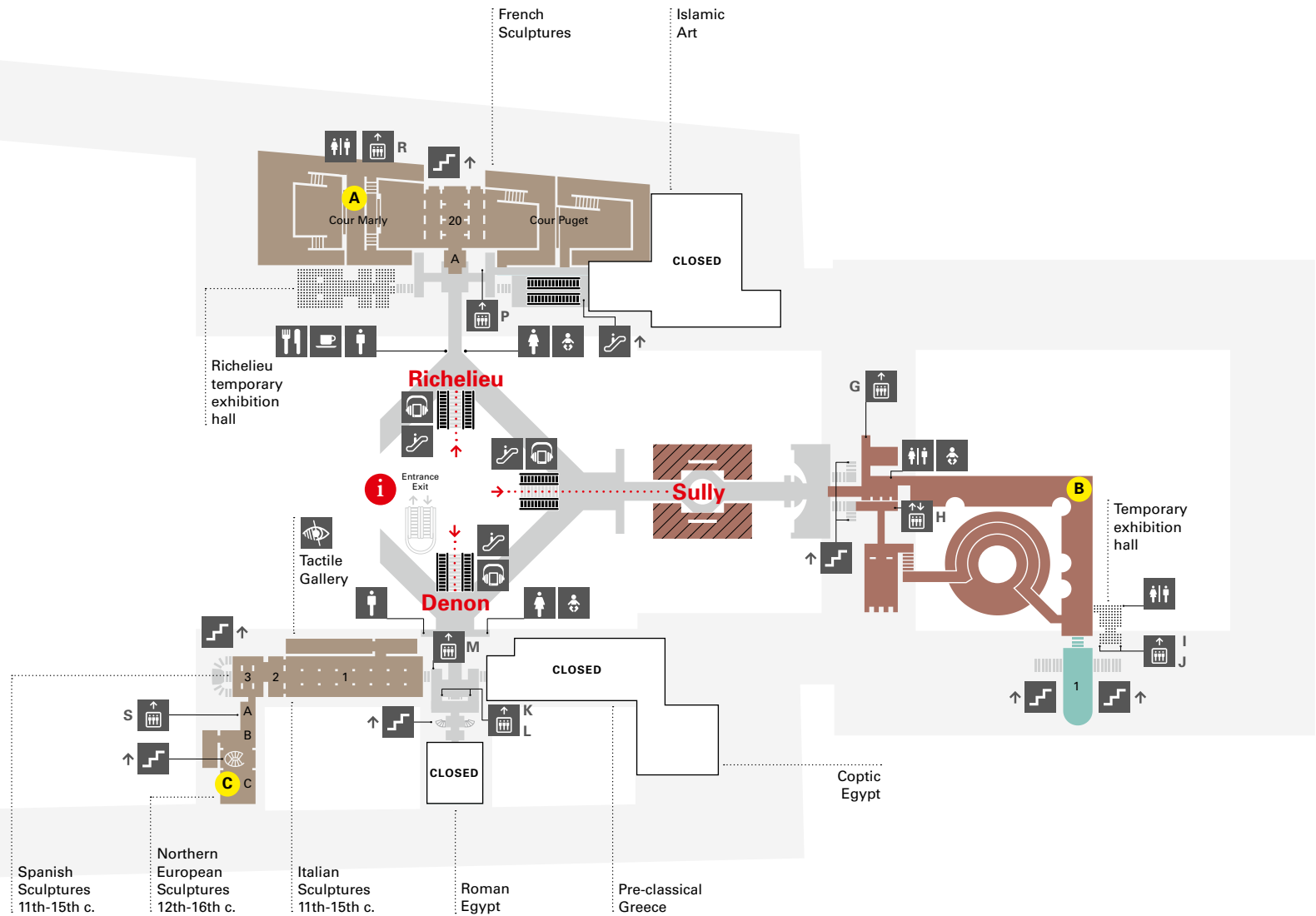
A
Horses of Marly,
G. Coustou



B
Medieval Moat



C
St. Mary Magdalene,
G. Erhart



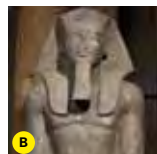
0

Ground Floor Rez-de-Chaussée

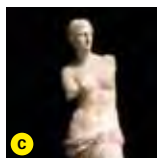
- Sculptures
- Near Eastern Antiquities
- Egyptian Antiquities
- Greek, Etruscan and Roman Antiquities
- Arts of Africa, Asia, Oceania and the Americas



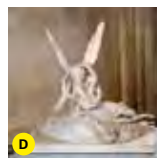
Code of Hammurabi



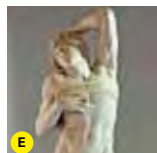
Colossal Statue of Ramesses II



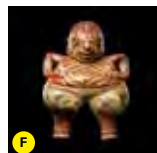
Aphrodite, known as the "Venus de Milo"



Psyche and Cupid, A. Canova

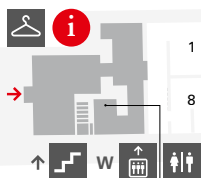


Captive (The Dying Slave), Michelangelo

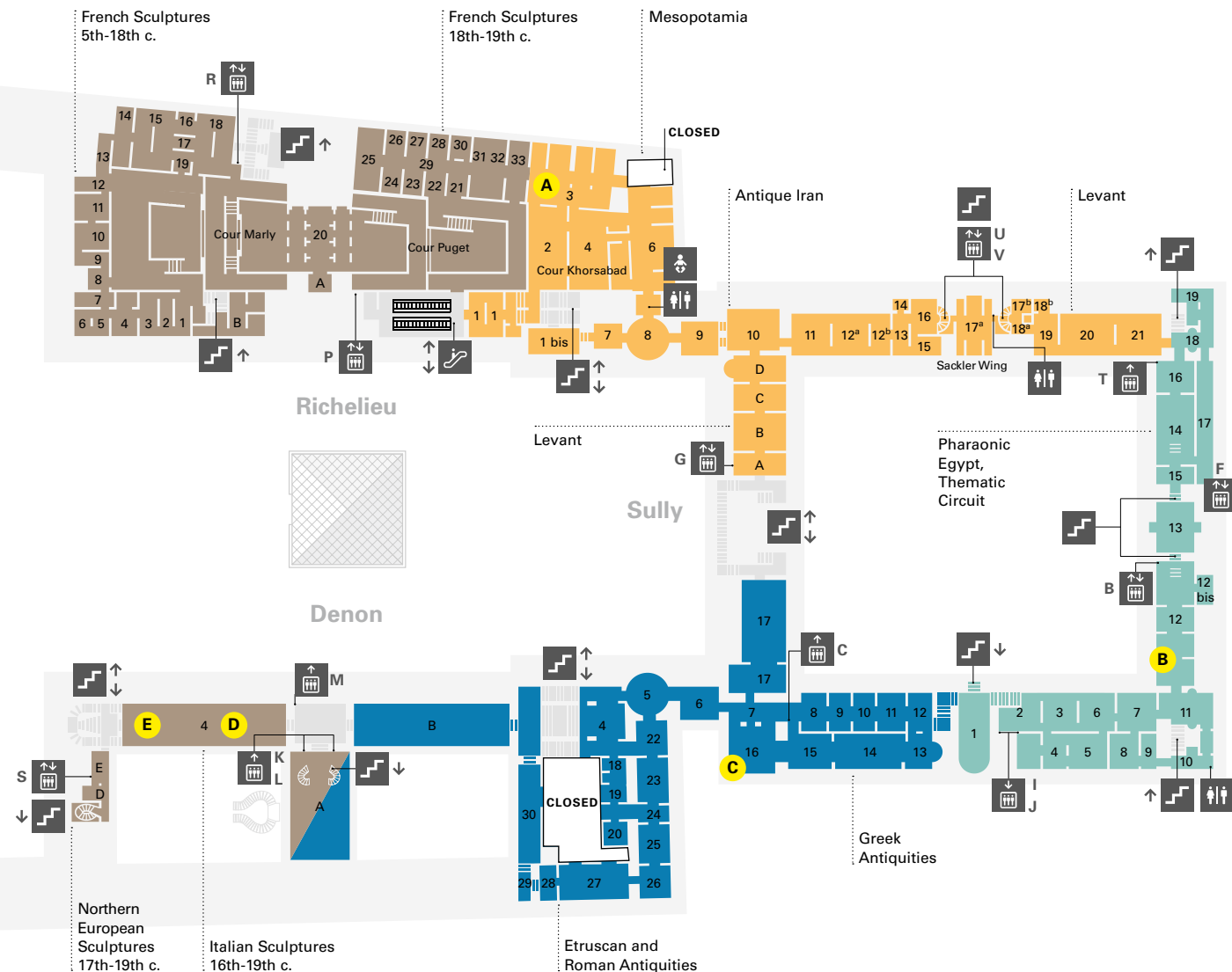


Sculpture from Chupicuaro (Mexico)

Porte des Lions entrance →



Arts of Africa,
Asia, Oceania
and the Americas



1

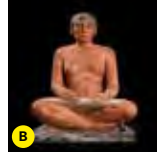
1st Floor 1^{er} étage

- Decorative arts
- Egyptian Antiquities
- Greek, Etruscan and Roman Antiquities
- Paintings
- Print and Drawings
- Temporary exhibition halls



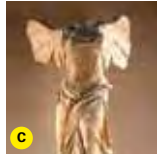
A

Napoleon III
Apartments



B

Seated Scribe



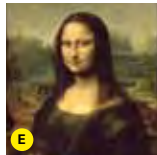
C

*The Winged Victory
of Samothrace*



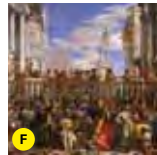
D

*The consecration of the
Emperor Napoleon I,
J. L. David*



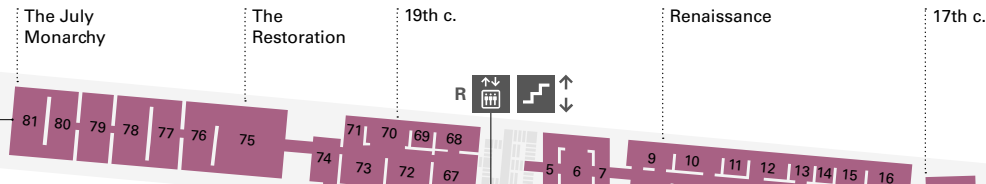
E

*Mona Lisa,
L. de Vinci*



F

*The Wedding Feast
at Cana, Véronèse*



Decorative arts
17th-18th c.

Richelieu

Denon

Sully

La Chapelle temporary
exhibition hall

Bronzes
and precious Objects

Terracotta

Pharaonic Egypt,
Chronological Circuit

Pre-classical
Greece

Greek
Ceramics

English Paintings

Current events

To Arts of Africa, Asia,
Oceania and the Americas

Spanish
Paintings

Italian Paintings
17th-18th c.

Italian Paintings
16th-17th c.

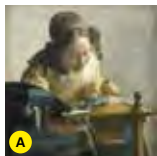
Italian Paintings
13th-15th c.

Apollo
Gallery

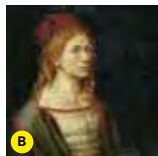
2

2nd Floor 2^e étage

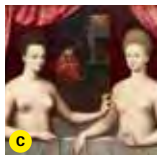
- French Paintings
- Prints and French Drawings
- German, Flemish Dutch, Belgian, Russian, Swiss and Scandinavian Paintings
- Temporary exhibition halls



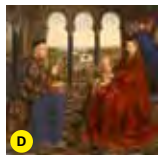
A
The Lacemaker,
J. Vermeer



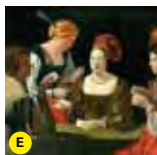
B
Self-Portrait,
A. Dürer



C
*Gabrielle d'Estrées
and Her Sister*



D
*The Virgin of Chancellor
Rolin*, J. van Eyck



E
The Card-Sharp,
G. de La Tour



F
The Turkish Bath
J.-A.-D. Ingres

